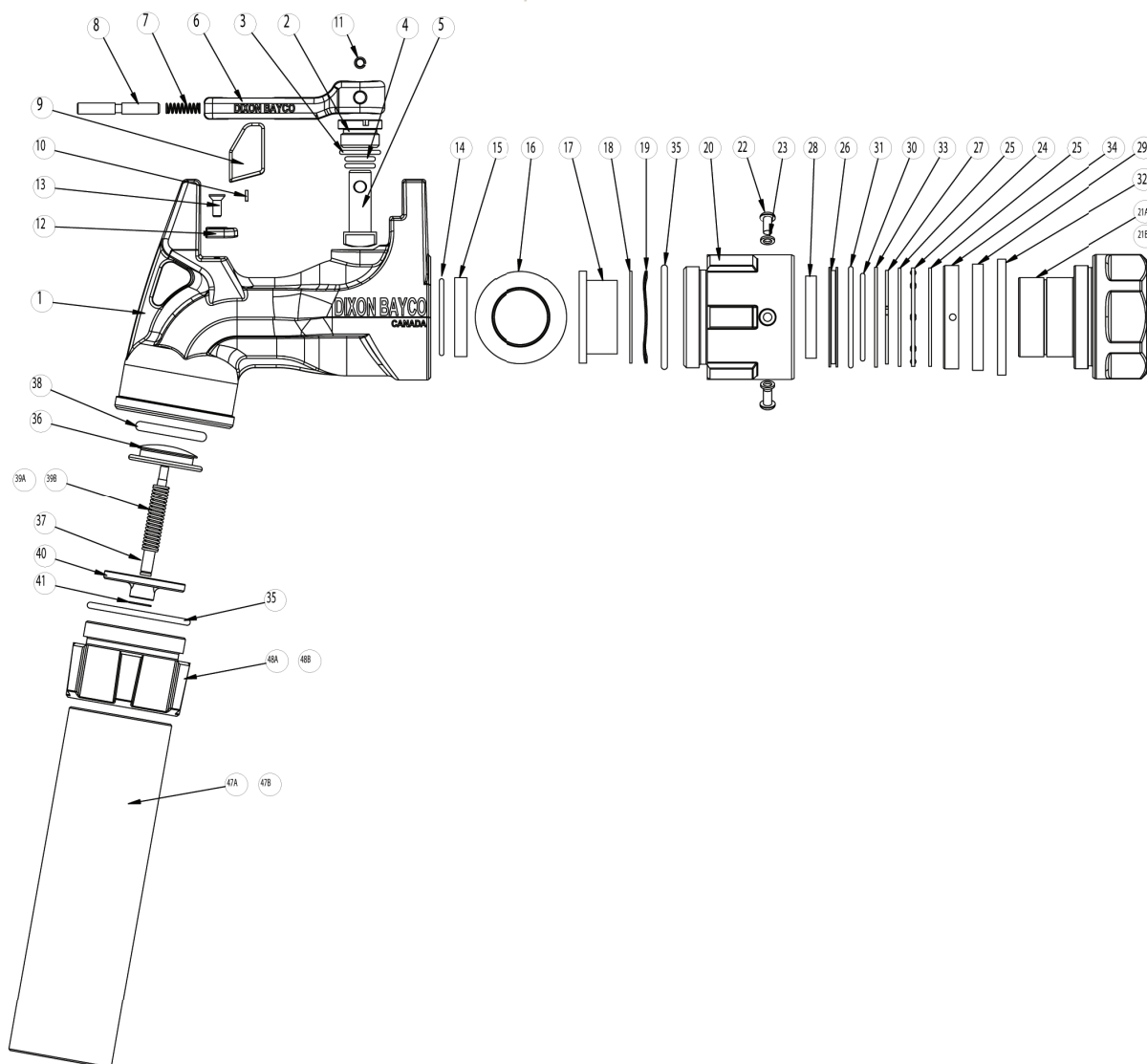


Fuel Nozzles

BL Super Ball Nozzles

BL 918, BL 919 & BL 920



Petroleum
Replacement Parts

Repair Kits

Part #	Description	Includes Item #
<i>SVMF-RK 1</i>	inlet swivel grease nipple kit (optional)	not illustrated
<i>SVMF-RK 22</i>	inlet swivel seal and wear kit	26, 28, 29, 30, 31, 32
<i>SVMF-RK 32</i>	complete inlet swivel rebuild kit	22, 23, 24, 25, 26, 27, 28, 29, 30, 31, 32, 33, 34
<i>SVMF-RK 42</i>	2" FNPT replacement inlet swivel	20, 21A, 22(3), 23(3), 24, 25(2), 26, 27, 28, 29, 30, 31, 32, 33, 34, 35
<i>SVMF-RK 52</i>	1½" FNPT replacement inlet swivel	20, 21B, 22(3), 23(3), 24, 25(2), 26, 27, 28, 29, 30, 31, 32, 33, 34, 35
<i>BL-RK 42</i>	ball valve shaft seal kit	2, 3, 4, 5
<i>BL-RK 102</i>	complete ball nozzle seal kit	3, 4, 14, 15, 17, 35, 38
<i>BL-RK 112</i>	optional check valve 5 PSI spring kit	35, 39B
<i>BL-RK 122</i>	standard check valve 3 PSI cartridge kit	35, 36, 37, 38, 39a, 40, 41
<i>BL-RK 13</i>	replacement trigger kit	6, 7, 8, 9, 10, 11, 12, 13(2)

Product instruction sheets and technical data, can be viewed on our website www.dixonbayco.com, and select the "Resources" Menu

Fuel Nozzles

BL Super Ball Nozzles

Bill of Materials

Item #	Description	Part #	Qty
1	body	---	1
2	bronze guide shaft	use kit BL-RK 42	1
3	O-ring	use kit BL-RK 42 or BL-RK 102 (includes item 35)	2
4	O-ring	use kit BL-RK 42 or BL-RK 102 (includes item 35)	1
5	shaft lever	use kit BL-RK 42	1
6	lever	use kit BL-RK 13	1
7	compression spring	use kit BL-RK 13	1
8	shaft latch	use kit BL-RK 13	1
9	latch	use kit BL-RK 13	1
10	screw	use kit BL-RK 13	1
11	pin	use kit BL-RK 13	1
12	lever plate	use kit BL-RK 13	1
13	screw	use kit BL-RK 13	2
14	O-ring	use kit BL-RK 102	1
15	seal	use kit BL-RK 102	1
16	ball	112091	1
17	ball seat	use kit BL-RK 102	1
18	washer	112092	1
19	wave spring	112090	2
20	swivel body	use kit SVMF-RK 42 or SVMF-RK 52	1
21A/B	swivel inlet	use kit SVMF-RK 42 or SVMF-RK 52	1
22	screw	use kit SVMF-RK 42 or SVMF-RK 52	3
23	lock washer	use kit SVMF-RK 42 or SVMF-RK 52	3
24	thrust bearing	use kit SVMF-RK 42 or SVMF-RK 52	1
25	thrust washer	use kit SVMF-RK 42 or SVMF-RK 52	2
26	O-ring holder	use kit SVMF-RK 22 , SVMF-RK 32 , SVMF-RK 42 or SVMF-RK 52	1
27	retaining ring	use kit SVMF-RK 32 (includes items 22, 23, 24, 25, 33, 34), SVMF-RK 42 or SVMF-RK 52	1
28	front bearing	use kit SVMF-RK 22 , SVMF-RK 32 , SVMF-RK 42 or SVMF-RK 52	1
29	rear bearing	use kit SVMF-RK 22 , SVMF-RK 32 , SVMF-RK 42 or SVMF-RK 52	1
30	O-ring	use kit SVMF-RK 22 , SVMF-RK 32 , SVMF-RK 42 or SVMF-RK 52	1
31	O-ring	use kit SVMF-RK 22 , SVMF-RK 32 , SVMF-RK 42 or SVMF-RK 52	1
32	dust seal	use kit SVMF-RK 22 , SVMF-RK 32 , SVMF-RK 42 or SVMF-RK 52	1
33	support washer	use kit SVMF-RK 42 or SVMF-RK 52	1
34	support ring	use kit SVMF-RK 42 or SVMF-RK 52	1
35	O-ring	use kit SVMF-RK 42 or SVMF-RK 52	1
36	poppet	use kit BL-RK 122	1
37	stem	use kit BL-RK 122	1
38	O-ring	use kit BL-RK 102 (includes item 35) or BL-RK 122	1
39A/B	compression spring	use kit BL-RK 112 or BL-RK 122	1
40	bridge	use kit BL-RK 122	1
41	retaining ring	use kit BL-RK 122	1
47A/47B	spout	391137 (2") / 1125A (1½")	1
48A/48B	spout adapter	341780 (NPT) / 341781 (BSPP)	1

Petroleum Replacement Parts

Product instruction sheets and technical data, can be viewed on our website www.dixonbayco.com, and select the "Resources" Menu