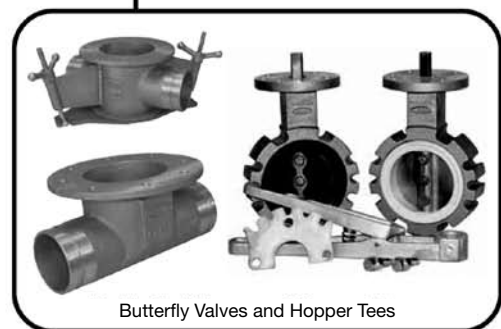
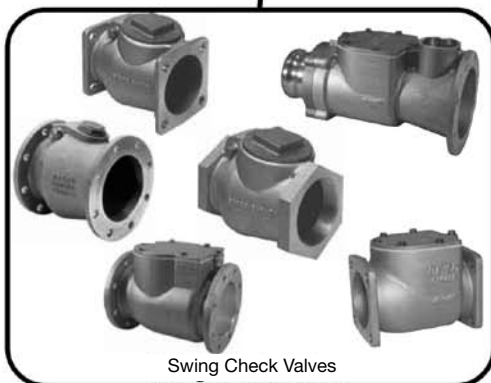
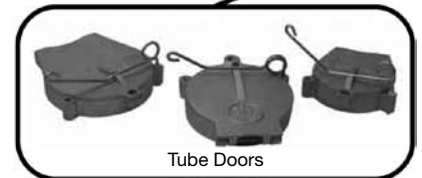
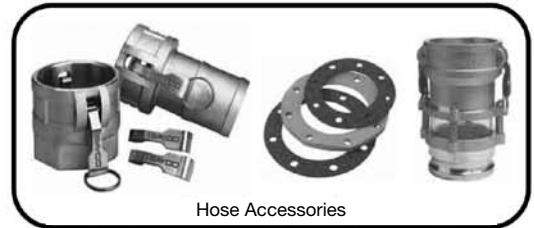


Dry Bulk

Dixon Dry Bulk products are designed for use with bulk trailers and truck blowers for the pneumatic transfer of dry bulk commodities such as powders, grains and plastic pellets. Other industrial applications are possible when pneumatic control of air or dry products is required.



K

Air Relief Valves

- Designed to relieve air pressure at a specific pressure setting (customer to advise when ordering - typical setting 15-25 psi)
- Air Relief Flow Rates:
 - A2180 up to 500 SCFM
 - A2182 up to 1400 SCFM
 - A3180 up to 1300 SCFM
- A choice of setting tolerances are provided. In addition to conventional field duty tolerances of +3/-0 psi, offers OEM tolerances of +1/-0 psi. The tighter tolerance air reliefs are designated with the prefix A, (A2180, A3180, A2182). Both conventional field duty and OEM tolerance products are of identical construction, however OEM models are identified with an A imprinted before the setting stamp

NOTE: Adjustable models, (A2180ADJ, A3108ADJ) are only available with OEM settings

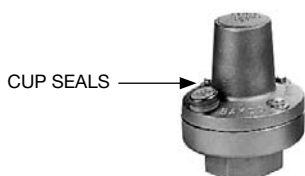
Relief Valve Flow Rates vary depending on the preset relief pressure, for specific relief rates contact Dixon.

Features:

- High Grade Diaphragms – White, food grade, and high temperature elastomers for all models
- Suitable for high temperature (to 200°C) and food grade service
- Tamper proof stainless steel cup seals
- Available in a female thread version
- Model 2182 has Silicon rubber poppet which reduces tendency to cake – cement, lime etc

Safety Note: Air/vacuum relief valves must be regularly inspected, cleaned and maintained. Product particles can prevent the valve from fully reseating which can lead to early opening/leakage from the valve or can prevent it from opening at all. For ease of removal and installation, to allow for inspections, cleaning and maintenance all 2180 and 2182 series air relief valves are available with either male cam and groove or grooved connections.

Designed for trailer service



PART NO.	DESCRIPTION
2180/xx	2" Female NPT
A2180/xx	2" Female NPT
3180/xx	3" Female NPT
A3180/xx	3" Female NPT



PART NO.	DESCRIPTION
2180V/15	2" Grooved End

Set at 15 psi



Shown with optional Safety Lanyard (CAL25) attached.

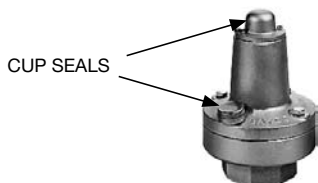


PART NO.	DESCRIPTION
2180B/15	2" Adapter

Set at 15 psi



Shown with optional Safety Lanyard (CAL25) attached.



PART NO.	DESCRIPTION
A2180/xxADJ	2" Female NPT
A3180/xxADJ	2" Female NPT

Adjustable models allow an adjustment of + or - 3 psi from specified setting. Designed for trailer service. /xx refers to the choice of pressure settings provided. Please request the required settings when ordering.

Designed for high capacity blower or trailer service



PART NO.	DESCRIPTION
2182/xx	2" Male NPT
A2182/xx	2" Male NPT
2182B/xx	2" Adapter
2182V/xx	2" Grooved End



PART NO.	DESCRIPTION
2182F/xx	2" Female NPT

/xx refers to the choice of pressure settings provided. Please request the required settings when ordering.

Pneuclean™ Pneumatic Filtration System

The Pneuclean™ unit is designed to remove microscopic particles generated by blowers during pneumatic conveying of contaminant-sensitive dry bulk products. Contaminants such as Iron and Hydrocarbons are produced by blowers and can adversely affect dry products such as plastic pellets and food materials.

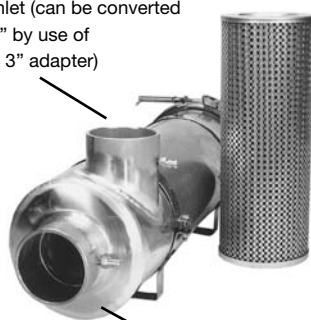
These filter units are typically used on dry bulk tanker trucks and placed after the blower and before the bulk storage tanker. This in-line pneumatic system is also suitable for industrial applications or wherever microscopic filtration (up to 4 microns) of impurities is required.

Standard units employ 4" inlets and outlets. However, 3" plumbing can be used with available weld-on 4" x 3" female NPT adapters.

Special cartridge-style filter elements have a typical life expectancy of approximately 12 months or 2000 hrs. of service.

4" AW and 4" DW Aluminium fittings may be butt-welded to filter inlet to allow quick coupler connection of hose.

4" inlet (can be converted to 3" by use of 4" x 3" adapter)



Stainless Steel cartridge with microporous, semi-permeable PTFE membrane filter element.

4" outlet (can be converted to 3" by use of 4" x 3" adapter)

PART NO.	DESCRIPTION
PC5000	4" Pneuclean complete housing with filter
PART NO.	REPLACEMENT PARTS DESCRIPTION
PC5001	Filter
PC5003	Mounting Bracket
PC5004	V-clamp
PC5005	Lid O-ring
PC5006	Bottom Gasket
PC5007	Lid w/Adjusting nut

In-Line High Pressure Air Filtration for 4" Air Lines

- FDA Medium with 99.99% maximum efficiency at 4 microns.
- Maximum air flow 1000 CFM's
- Back pressure only .05 psi
- Temperature range -45° to 230°C
- Average 12 month filter cartridge lifespan
- Quick release V-clamp for easy inspection
- Overall weight 26 lbs (11.8kg)

Swing Check Valves

- High flow body design
- Drop in flapper assembly
- High temperature white food grade seal
- Easy maintenance inspection lid
- Captive springs and shaft to prevent contamination
- Stainless Steel hardware



3030SQ



3090MA

SWING CHECK VALVES	
PART NO.	DESCRIPTION
3030SQ	3" Square Flange Swing Check Valve
3090M	3" Swing Check Manifold
3090MA	3" Swing Check Manifold with 3" Adapter
3090MB	3" Swing Check Manifold with 4" Adapter
3030SK	Security Kit For 3" Swing Check Manifold
3090MS	3" Swing Check Manifold with Security Kit installed
3090MAS	3" Swing Check Manifold with 3" Adapter and Security Kit installed
3090MBS	3" Swing Check Manifold with 4" Adapter and Security Kit installed

3" and 4" Swing Check Valves

- Cast Aluminium bodies with Bronze inspection caps
- Safety flapper assembly - all flapper assemblies are drilled and pinned and will not come apart
- Choice of seals: metal-to-metal, Buna or Silicon Rubber seals
- Choice of models with or without spring loaded flapper
- Full flow design - flappers swing out of flow path for maximum flow and low resistance
- Designs with large caps allow flapper repair/rebuild on unit

Check valves allow one way directional flow only. They are used as a protective safety device to prevent flow reversal should back pressure result. These valves are designed specifically for service with pneumatic equipment which transfers dry bulk commodities.



3" ROUND FLANGED (TTMA)	
PART NO.	DESCRIPTION
3000N	Metal-to-metal seal
3000SP	Metal-to-metal seal & spring loaded flapper
3000B	Buna Rubber seal
3000S	Silicon Rubber seal
3000BSP	Buna seal & spring loaded flapper
3000SSP	Silicon Rubber seal & spring loaded flapper

K



3" SQUARE FLANGED (TTMA)

PART NO.	DESCRIPTION
3001SQN	Metal-to-metal seal
3001SQSP	Metal-to-metal seal & spring loaded flapper
3001SQB	Buna Rubber seal
3001SQS	Silicon Rubber seal
3001SQBSP	Buna seal & spring loaded flapper
3001SQSSP	Silicon Rubber seal & spring loaded flapper



3" THREADED ENDS (NPT)

PART NO.	DESCRIPTION
3000TE	Metal-to-metal seal
3000TESP	Metal-to-metal seal & spring loaded flapper
3000TEB	Buna Rubber seal
3000TES	Silicon Rubber seal
3000TEBSP	Buna seal & spring loaded flapper
3000TESSP	Silicon Rubber seal & spring loaded flapper

Gaskets should be purchased separately.



4" ROUND FLANGED (TTMA)

PART NO.	DESCRIPTION
4040RD	Metal-to-metal seal & spring loaded flapper

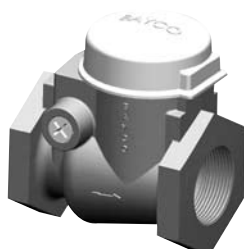
4" THREADED ENDS (NPT)

PART NO.	DESCRIPTION
4040TE	Silicone seal, spring loaded flapper



2" Swing Check Valves

- Aluminium cast, square flanged and threaded end models
- Self-aligning, moulded "white food grade EPDM" rubber flapper assembly (176°C / 350°F) with externally mounted springs, to prevent ingestion of parts
- Easy open (no tools required) inspection cap
- Full flow performance



2" SWING CHECKS

PART NO.	DESCRIPTION
3020SQ	2" Square Flange
3020TE	2" Female NPT

Horizontal Swing Check Valves

- Swing Check Valves are designed to prevent backflow in plumbing and liquid piping systems, while offering full flow performance with a minimum of turbulence or pressure loss
- A positive seating disc allows flow only in one direction and a screw-in cap provides easy access for periodic cleaning
- For horizontal or vertical use
- Rated to 200 psi WOG
- Brass body & disc
- Temperature range (-4°C to 66°C / -20°F to 150°F)



FEMALE NPT x FEMALE NPT	
PART NO.	DESCRIPTION
SWCV50	1/2"
SWCV75	3/4"
SWCV100	1"
SWCV125	1 1/4"
SWCV150	1 1/2"
SWCV200	2"
SWCV300	3"

In-line Sight Glass

- Designed for dry bulk transfer applications
- Available in combination of 3" and 4" coupler or adapter ends
- Includes:
 - Aluminium bodies
 - Buna seals
 - Acrylic sight glasses
 - Stainless steel hardware
 - Bronze cam arms (where applicable)



PART NO.	DESCRIPTION
3544CA	4" Coupler x 4" Adapter
3533CA	3" Coupler x 3" Adapter
3543CA	4" Coupler x 3" Adapter
3534CA	3" Coupler x 4" Adapter
3533AA	3" Adapter x 3" Adapter
3544AA	4" Adapter x 4" Adapter
3534AA	3" Adapter x 4" Adapter
3544CC	4" Coupler x 4" Coupler
3533CC	3" Coupler x 3" Coupler
3543CC	4" Coupler x 3" Coupler

K

Butterfly Valves - 400 Series

Housing:	Aluminium
Discs:	Type 316 Stainless or Nodular Iron
Stem Packing:	Buna-N
Stem Bushings:	Thermal plastic polymer, top and bottom
Resilient Seat:	Nitrile
Handle:	High strength 713 Alloy Aluminium with retrogressive re-aging process - stronger than industry standard Cast Iron handles. Stainless Steel spring and locking lever pin
Throttling Plate:	Five position, high strength Aluminium Alloys

Features:

- Aluminium Body
- Nodular Iron Disc
- 17-4 SS Stem
- Nitrile, FDA approved Black Seat



NODULAR IRON					
COMPLETE VALVE WITH NODULAR IRON DISC		NODULAR IRON REPLACEMENT DISCS		BLACK REPLACEMENT NITRILE SEATS	
PART NO.	SIZE	PART NO.	SIZE	PART NO.	SIZE
2-400-1500	2"	2-400-422237F	2"	2-400-422500	2"
3-400-1500	3"	3-400-422237F	3"	3-400-422500	3"
4-400-1500	4"	4-400-422237U	4"	4-400-422500	4"
4A-400-1500	4" TTMA	5-400-422237U	5"	4A-400-422500	4" TTMA
5-400-1500	5"	6-400-422237U	6"	5-400-422500	5"
6-400-1500	6"			6-400-422500	6"

Handles should be ordered separately.

Features:

- Aluminium Body
- 316 SS Disc
- 17-4 SS Stem
- Nitrile, FDA approved White Seat



STAINLESS STEEL					
COMPLETE VALVE WITH 316 STAINLESS STEEL DISC		316 STAINLESS STEEL REPLACEMENT DISCS		WHITE REPLACEMENT NITRILE SEATS	
PART NO.	SIZE	PART NO.	SIZE	PART NO.	SIZE
3-400-3501	3"	2-400-422209F	2"	2-400-422501	2"
4-400-3501	4"	3-400-422209F	3"	3-400-422501	3"
5-400-3501	5"	4-400-422209U	4"	4-400-422501	4"
6-400-3501	6"	5-400-422209U	5"	4A-400-422501	4" TTMA
		6-400-422209U	6"	5-400-422501	5"
				6-400-422501	6"

Handles should be ordered separately.

K

Tanker, Overfill Prevention & Storage Tank Products

Butterfly Valves - 390 Series

Housing:	Aluminium
Discs:	Type 316 Stainles
Body Screws:	Cadmium Plated Steel
Stem Packing:	Buna
Stem Bushings:	Thermal plastic polymer, top and bottom
Resilient Seat:	Nitrile
Handle:	High strength 713 Alloy Aluminium with retrogressive re-aging process - stronger than industry standard Cast Iron handles. Stainless Steel spring and locking lever pin
Throttling Plate:	Five position, high strength Aluminium Alloy

Features:

- 2 Piece Aluminium Body
- One piece 316 SS Disc and Stem
- Nitrile, FDA approved White Seat

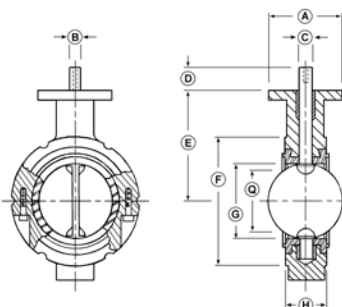


STAINLESS STEEL					
COMPLETE VALVE WITH 316 SS DISC		316 STAINLESS STEEL REPLACEMENT DISCS		WHITE REPLACEMENT NITRILE SEATS	
PART NO.	SIZE	PART NO.	SIZE	PART NO.	SIZE
3-390-828501	3"	3-390-209F	3"	3-400-422501	3"
4-390-828U501	4"	4-390-209U	4"	4-400-422501	4"
5-390-828U501	5"	5-390-209U	5"	5-400-422501	5"
6-390-828U501	6"	6-390-209U	6"	6-390-363501	6"

Handles should be ordered separately.

For 6" 390 series valve, use special handle 400-206-65.

K



DIMENSIONS & WEIGHTS										
SIZE	DIMENSIONS									WEIGHT IN LBS.
	A	B	C	D	E	F	G	H	Q	
2"	4.000	.375	.563	1.250	3.938	4.125	2.125	1.625	1.688	3
3"	4.000	.375	.563	1.250	4.875	5.375	3.125	1.750	2.875	4
4"	4.000	.438	.625	1.250	6.000	6.875	4.125	2.000	3.875	7
5"	4.000	.438	.625	1.250	6.000	7.625	5.188	2.125	5.000	9
6"	4.000	.438	.625	1.250	6.500	8.750	6.125	2.125	6.000	9

NOTE: Q dimension is the minimum allowable inside diameter of the pipe or mating flange.

Butterfly Valve Accessories



ALUMINIUM HANDLE KIT

PART NO.	SIZE
206-23-5	2" and 3"
206-46-5	4" thru 6"
400-206-65*	6" - 390

BUSHING & PACKING KITS

PART NO.	SIZE
2-3-400-99-BPKIT	2" and 3"
4-6-400-99-BPKIT	4" thru 6"
6-99-400BPKIT*	6"

316 STAINLESS SCREW SETS

PART NO.	SIZE
2-3-213	2" and 3"
4-5-6-213	4" thru 6"

17-4 STAINLESS STEMS

PART NO.	SIZE
2-400-422240	2"
3-400-422240	3"
4-400-422240	4"
5-400-422240	5"
6-400-422240	6"

Includes handle plate kit and handle/lever assembly.

*Use on 6" 390 series valves