

## SMS NUT 6 SLOTS

| PART NO.    | SIZE   | A (mm)    | B (mm) | C (mm) |
|-------------|--------|-----------|--------|--------|
| 13R-G100SMS | 1"     | 40 x 1/6  | 51.00  | 19.00  |
| 13R-G150SMS | 1 1/2" | 60 x 1/6  | 74.00  | 23.00  |
| 13R-G200SMS | 2"     | 70 x 1/6  | 84.00  | 24.00  |
| 13R-G250SMS | 2 1/2" | 85 x 1/6  | 100.00 | 28.00  |
| 13R-G300SMS | 3"     | 98 x 1/6  | 114.00 | 30.00  |
| 13R-G400SMS | 4"     | 125 x 1/4 | 138.00 | 31.00  |



## SMS BLANK

| PART NO.      | SIZE   |
|---------------|--------|
| 16AMP-R100SMS | 1"     |
| 16AMP-R150SMS | 1 1/2" |
| 16AMP-R200SMS | 2"     |
| 16AMP-R250SMS | 2 1/2" |
| 16AMP-R300SMS | 3"     |
| 16AMP-R400SMS | 4"     |

Please Note: To be used with a matching nut.



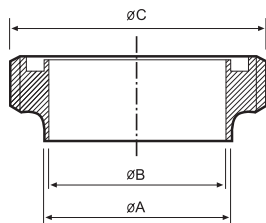
## SMS BLANK NUT 6 SLOTS WITH CHAIN

| PART NO.      | SIZE   |
|---------------|--------|
| 13RBN-G100SMS | 1"     |
| 13RBN-G150SMS | 1 1/2" |
| 13RBN-G200SMS | 2"     |
| 13RBN-G250SMS | 2 1/2" |
| 13RBN-G300SMS | 3"     |
| 13RBN-G400SMS | 4"     |



## SMS SPANNER

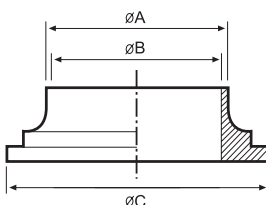
| PART NO.  | SIZE   |
|-----------|--------|
| SMS-1SP   | 1"     |
| SMS-1.5SP | 1 1/2" |
| SMS-2SP   | 2"     |
| SMS-2.5SP | 2 1/2" |
| SMS-3SP   | 3"     |
| SMS-4SP   | 4"     |



## SMS WELD MALE

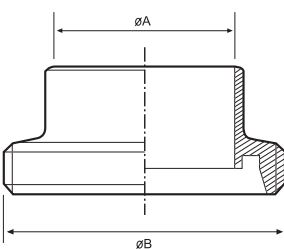
| PART NO.    | SIZE   | A (mm) | B (mm) | C (mm)  |
|-------------|--------|--------|--------|---------|
| 15A-R100SMS | 1"     | 25.4   | 22.1   | 40x1/6  |
| 15A-R150SMS | 1 1/2" | 38.1   | 34.8   | 60x1/6  |
| 15A-R200SMS | 2"     | 50.8   | 47.5   | 70x1/6  |
| 15A-R250SMS | 2 1/2" | 63.5   | 60.2   | 85x1/6  |
| 15A-R300SMS | 3"     | 76.2   | 72.9   | 98x1/6  |
| 15A-R400SMS | 4"     | 101.6  | 97.6   | 125x1/4 |

E



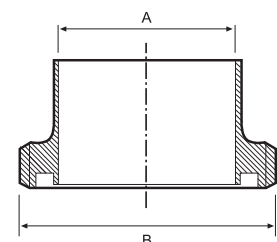
## SMS WELD LINER

| PART NO.    | SIZE   | A (mm) | B (mm) | C (mm) |
|-------------|--------|--------|--------|--------|
| 14A-R100SMS | 1"     | 25.4   | 22.1   | 35.50  |
| 14A-R150SMS | 1 1/2" | 38.1   | 34.8   | 55.00  |
| 14A-R200SMS | 2"     | 50.8   | 47.5   | 65.00  |
| 14A-R250SMS | 2 1/2" | 63.5   | 60.2   | 80.00  |
| 14A-R300SMS | 3"     | 76.2   | 72.9   | 93.00  |
| 14A-R400SMS | 4"     | 101.6  | 97.6   | 127.00 |



## SMS EXPANDING MALE

| PART NO.    | SIZE   | A (mm) | B (mm)  |
|-------------|--------|--------|---------|
| 15R-R100SMS | 1"     | 22.20  | 40x1/6  |
| 15R-R150SMS | 1 1/2" | 34.90  | 60x1/6  |
| 15R-R200SMS | 2"     | 47.60  | 70x1/6  |
| 15R-R250SMS | 2 1/2" | 60.30  | 85x1/6  |
| 15R-R300SMS | 3"     | 73.00  | 98x1/6  |
| 15R-R400SMS | 4"     | 97.60  | 125x1/4 |



## SMS EXPANDING LINER

| PART NO.    | SIZE   | A (mm) | B (mm) |
|-------------|--------|--------|--------|
| 14R-R100SMS | 1"     | 22.20  | 35.50  |
| 14R-R150SMS | 1 1/2" | 34.90  | 55.00  |
| 14R-R200SMS | 2"     | 47.60  | 65.00  |
| 14R-R250SMS | 2 1/2" | 60.30  | 80.00  |
| 14R-R300SMS | 3"     | 73.00  | 93.00  |
| 14R-R400SMS | 4"     | 97.60  | 127.00 |



## HOLEDALL® SMS EXTERNAL CRIMP STEM

| PART NO.      | SIZE   |
|---------------|--------|
| <b>FEMALE</b> |        |
| HA0616        | 1"     |
| HA0617        | 1 1/2" |
| HA0618        | 2"     |
| HA0619        | 2 1/2" |
| HA0620        | 3"     |
| HA0621        | 4"     |
| <b>MALE</b>   |        |
| HA0622        | 1"     |
| HA0623        | 1 1/2" |
| HA0624        | 2"     |
| HA0625        | 2 1/2" |
| HA0626        | 3"     |
| HA0627        | 4"     |

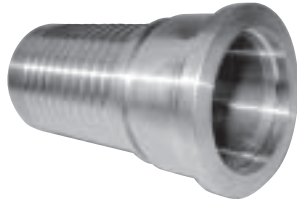
Please Note: All stems are manufactured to suit inch bore hoses (not metric hose bores).

E

## HOLEDALL® SMS EXTERNAL CRIMP FERRULES

| PART NO.     | SIZE   | HOSE OD RANGE (mm) |       |
|--------------|--------|--------------------|-------|
|              |        | From               | To    |
| HA0249-43-3  | 1"     | 35.7               | 36.5  |
| HA0249-45-3  | 1"     | 36.9               | 37.7  |
| HA0249-46-3  | 1"     | 38.1               | 38.9  |
| HA0249-47-3  | 1"     | 39.3               | 40.1  |
| HA0249-48-3  | 1"     | 40.5               | 41.3  |
| HA0250-56-3  | 1 1/2" | 48.4               | 49.6  |
| HA0250-58-3  | 1 1/2" | 50.0               | 51.2  |
| HA0250-59-3  | 1 1/2" | 51.6               | 52.8  |
| HA0250-61-3  | 1 1/2" | 53.2               | 54.4  |
| HA0251-70-3  | 2"     | 62.7               | 63.9  |
| HA0251-72-3  | 2"     | 64.3               | 65.5  |
| HA0251-74-3  | 2"     | 65.9               | 67.1  |
| HA0251-75-3  | 2"     | 67.4               | 68.7  |
| HA0252-84-3  | 2 1/2" | 76.1               | 78.1  |
| HA0253-98-3  | 3"     | 91.7               | 92.9  |
| HA0253-100-3 | 3"     | 92.1               | 93.3  |
| HA0253-101-3 | 3"     | 93.6               | 94.9  |
| HA0253-103-3 | 3"     | 95.2               | 96.5  |
| HA0253-105-3 | 3"     | 96.8               | 98.0  |
| HA0253-106-3 | 3"     | 98.4               | 99.6  |
| HA0301-129-5 | 4"     | 117.5              | 118.7 |
| HA0301-130-5 | 4"     | 119.0              | 120.3 |
| HA0301-132-5 | 4"     | 120.6              | 121.9 |
| HA0301-133-5 | 4"     | 122.2              | 123.5 |
| HA0301-135-5 | 4"     | 123.8              | 125.0 |





## HOLEDALL® SMS EXTERNAL CRIMP STEM

| PART NO. | SIZE   |
|----------|--------|
| FEMALE   |        |
| HA0608   | 1 1/2" |
| HA0609   | 2"     |
| HA0610   | 2 1/2" |
| HA0611   | 3"     |
| HA0612   | 4"     |

Please Note: All stems are manufactured to suit inch bore hoses (not metric hose bores).

E

## HOLEDALL® SMS INTERNAL EXPANSION (IX) FERRULES

| PART NO.     | SIZE   | HOSE OD RANGE (mm) |       |
|--------------|--------|--------------------|-------|
|              |        | From               | To    |
| HA0259-43-3  | 1"     | 35.7               | 36.5  |
| HA0259-45-3  | 1"     | 36.9               | 37.7  |
| HA0259-46-3  | 1"     | 38.1               | 38.9  |
| HA0259-47-3  | 1"     | 39.3               | 40.1  |
| HA0259-48-3  | 1"     | 40.5               | 41.3  |
| HA0260-56-3  | 1 1/2" | 48.4               | 49.6  |
| HA0260-58-3  | 1 1/2" | 50.0               | 51.2  |
| HA0260-59-3  | 1 1/2" | 51.6               | 52.8  |
| HA0260-61-3  | 1 1/2" | 53.2               | 54.4  |
| HA0261-70-3  | 2"     | 62.7               | 63.9  |
| HA0261-72-3  | 2"     | 64.3               | 65.5  |
| HA0261-74-3  | 2"     | 65.9               | 67.1  |
| HA0261-75-3  | 2"     | 67.4               | 68.7  |
| HA0262-84-3  | 2 1/2" | 76.1               | 78.1  |
| HA0263-98-3  | 3"     | 91.7               | 92.9  |
| HA0263-100-3 | 3"     | 92.1               | 93.3  |
| HA0263-101-3 | 3"     | 93.6               | 94.9  |
| HA0263-103-3 | 3"     | 95.2               | 96.5  |
| HA0263-105-3 | 3"     | 96.8               | 98.0  |
| HA0263-106-3 | 3"     | 98.4               | 99.6  |
| HA0303-129-5 | 4"     | 117.5              | 118.7 |
| HA0303-130-5 | 4"     | 119.0              | 120.3 |
| HA0303-132-5 | 4"     | 120.6              | 121.9 |
| HA0303-133-5 | 4"     | 122.2              | 123.5 |
| HA0303-135-5 | 4"     | 123.8              | 125.0 |



Please Note: For plastic IX ferrules see page 47.



## SMS SEAL RING L TYPE SILICON

| PART NO.      | SIZE   | ID    | OD     |
|---------------|--------|-------|--------|
| 40MP-XW100SMS | 1"     | 22.80 | 31.80  |
| 40MP-XW150SMS | 1 1/2" | 35.80 | 47.80  |
| 40MP-XW200SMS | 2"     | 48.80 | 60.80  |
| 40MP-XW250SMS | 2 1/2" | 61.00 | 73.30  |
| 40MP-XW300SMS | 3"     | 73.40 | 85.80  |
| 40MP-XW400SMS | 4"     | 98.20 | 115.70 |



## SMS SEAL RING L TYPE EPDM

| PART NO.     | SIZE   | ID    | OD     |
|--------------|--------|-------|--------|
| 40MP-E100SMS | 1"     | 22.80 | 31.80  |
| 40MP-E150SMS | 1 1/2" | 35.80 | 47.80  |
| 40MP-E200SMS | 2"     | 48.80 | 60.80  |
| 40MP-E250SMS | 2 1/2" | 61.00 | 73.30  |
| 40MP-E300SMS | 3"     | 73.40 | 85.80  |
| 40MP-E400SMS | 4"     | 98.20 | 115.70 |



## SEAL TYPE SMS O-RING Viton®

| PART NO.       | SIZE   | ID    | OD     |
|----------------|--------|-------|--------|
| 40MP-SFY100SMS | 1"     | 22.80 | 31.80  |
| 40MP-SFY150SMS | 1 1/2" | 35.80 | 47.80  |
| 40MP-SFY200SMS | 2"     | 48.80 | 60.80  |
| 40MP-SFY250SMS | 2 1/2" | 61.00 | 73.30  |
| 40MP-SFY300SMS | 3"     | 73.40 | 85.80  |
| 40MP-SFY400SMS | 4"     | 98.20 | 115.70 |



## SEAL TYPE SMS O-RING BUNA (NITRILE)

| PART NO.     | SIZE   | ID    | OD     |
|--------------|--------|-------|--------|
| 40MP-U100SMS | 1"     | 22.80 | 31.80  |
| 40MP-U150SMS | 1 1/2" | 35.80 | 47.80  |
| 40MP-U200SMS | 2"     | 48.80 | 60.80  |
| 40MP-U250SMS | 2 1/2" | 61.00 | 73.30  |
| 40MP-U300SMS | 3"     | 73.40 | 85.80  |
| 40MP-U400SMS | 4"     | 98.20 | 115.70 |

PLEASE CALL FOR ALL YOUR OTHER SMS REQUIREMENTS. MANY OTHER PARTS AVAILABLE.